

3 Spotter Guides

SHINGLE / SAND BEACHES



Sea kale

A relative of cabbage it is usually found on shingle beaches.



Sea radish

With yellow flowers and rough hairy leaves, it is found at the top of the beach.



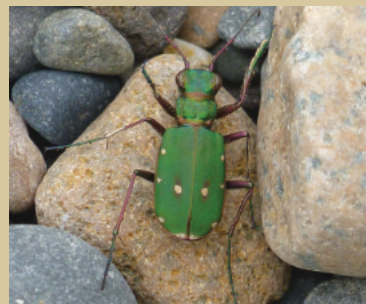
Sea beet

A straggly plant of shingle and sand it has very glossy leaves.



Sea sandwort

Usually found as a low carpet of green on the top of sandy beaches.



Green tiger beetle

A bright green beetle that quickly runs about looking for insects to eat.



Woody canoe-bubble shell

An unusual shell from an underwater sea-slug sometimes found at Sandhead.



Mermaids purse

The empty egg-case of sharks come in many shapes and sizes.



Keith Kirk

Ringed plover

Darting about close to the waves this small bird can be difficult to spot.



Peter Norman

Sandwich tern

A white bird with a black cap it makes a noisy kirrik call as it flies past.



Share your finds
#RhinsRecording



Find out more about recording wildlife on the Rhins at
<https://swseic.org.uk/projects/explore-record-rhins/>